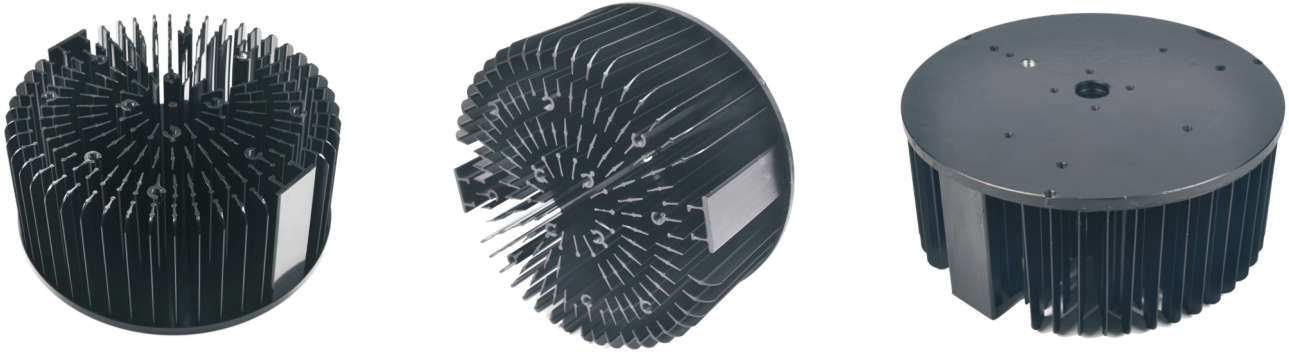


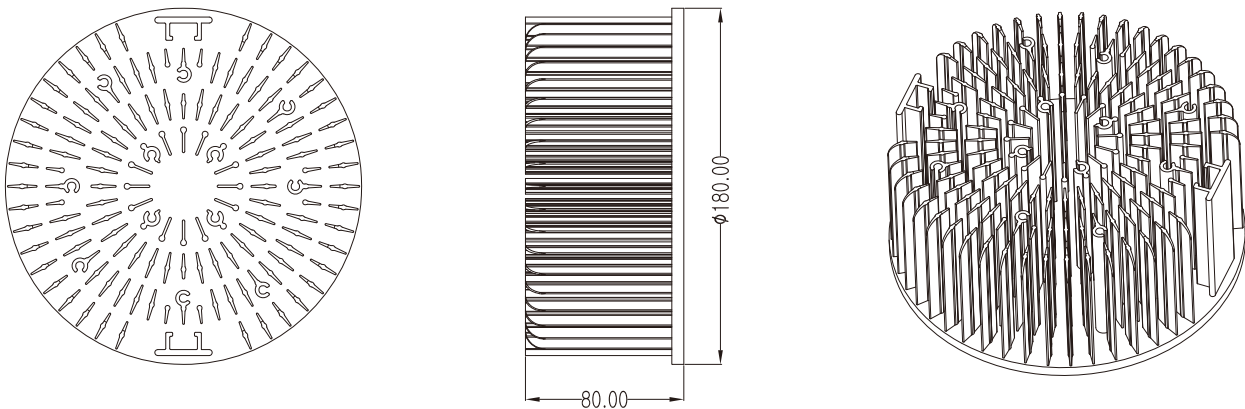
100W SMD LED Lighting Heat Sink



Features :

- Best Cost/Performance Custom Thermal Solution for 100W SMD LED Lighting; Thermal Resistance 0.60~0.80°C/W
- Most Optimum Surface Area and Heat Sink Designs for Best Heat Dissipation and Budget Affordability
- Pure Aluminum AL1070 Made by Cold-Forging Techniques much better than Conventional Extrusion or Die-Casting Techniques; Superior Thermal Conductivity - 238W/(m*K)
- Flexible Adaption with Multiple Choices of SMD LED Modules 3030 and etc
- Advanced Surface Treatment & Custom Color Options: Anodized Black or Clear; Electrophoresis Black
- Great Varieties of Applications: High Bay Light, Down Light, Flood Light, Street Light, Grow , Light, etc

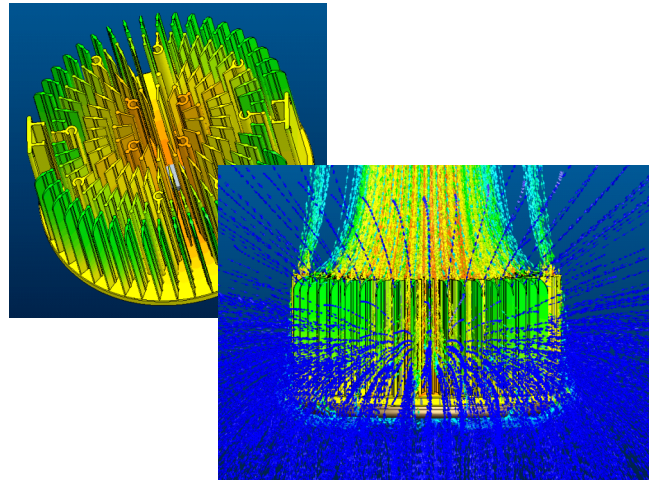
100W Heat Sink Dimensions:



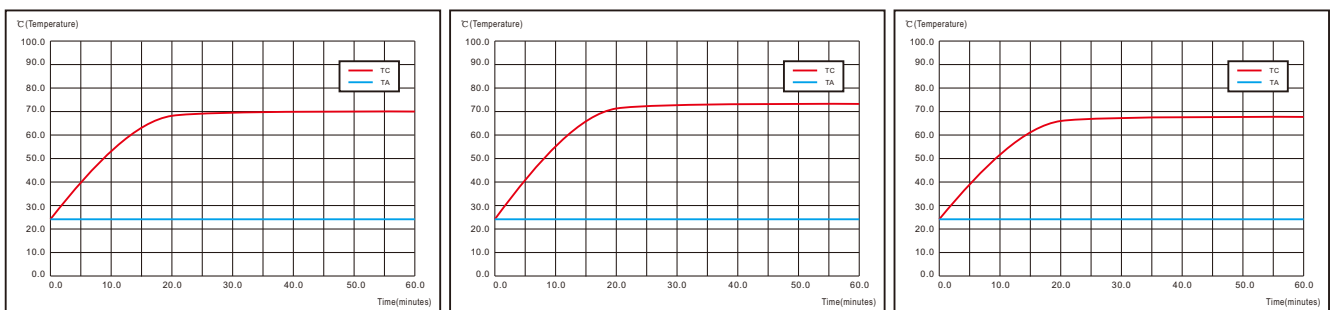
Product Information :

Model Number: DG180-100-001
 Dimension (mm): ϕ 180X80
 Thermal Resistance($^{\circ}\text{C}/\text{W}$): 0.6~0.8
 Total Dissipated Power (W): 80-100W
 Weight : 1.1 kgs/2.4 lbs
 Material: AL1070
 Surface Treatment Options : Anodized
 Black/Clear

Heat Dissipation Simulation :



Temperature Rise Curve:



Model Number	LED Power (W)	Ambient Temperature Ta ($^{\circ}\text{C}$)	Heat Sink Temperature Tc ($^{\circ}\text{C}$)	Temperature Rise ΔT ($^{\circ}\text{C}$)	Thermal resistance Rca ($^{\circ}\text{C}/\text{W}$)	Angle of LED Simulator
Cree	100	25	70	45	0.692	90 $^{\circ}$
Bridgelux	100	25	73.5	48.5	0.692	90 $^{\circ}$
Citizen	100	25	68	43	0.716	90 $^{\circ}$

Applications:

A great variety of applications in High Bay Light, Down Light, Flood Light, Street Light, Sports Light, and more.

