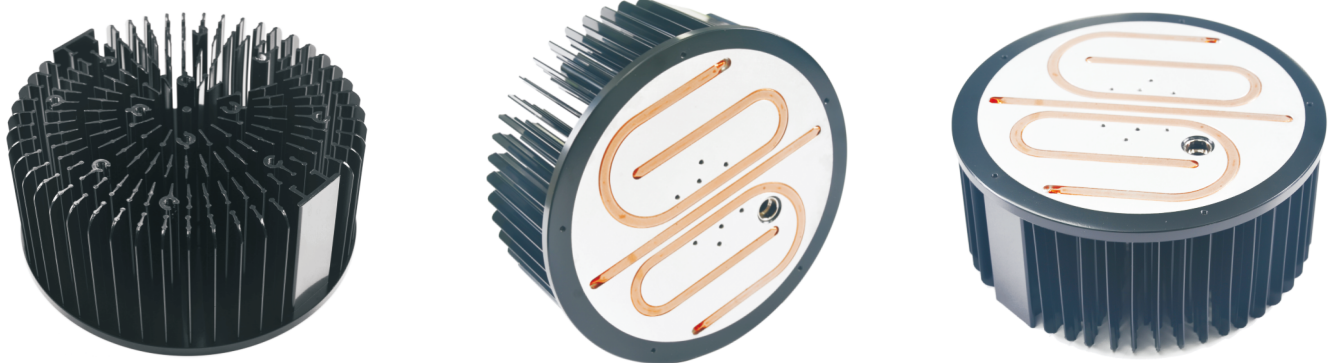




100W COB LED Lighting Heat Pipes Module DG180-100-A01

COB Heat Sink



Features :

- Industry Best 100W COB Thermal Solution
- Patented Heat Pipes Absolute Embedding Flatness Technology
- Much Faster Heat Dissipation Speed to Avoid Light Decay Risk
- Most Advanced Cold-Forging Heat Sink Production Techniques
- Much Better Thermal Conductive Aluminum Material (AL 1070)
- Most Advanced Electrophoresis Coating Surface Treatment for Best Corrosion Resistance
- Flexible Mounting Systems Custom Design & Built
- Great Variety of COB LED Lighting Applications

Product Information:

Model Number: DG180-100-A01

Dimension (mm): ϕ 180 x 80

100W COB Brightness (lm): 10,000~14,000

Cooling Surface Area (mm²) : 398,982

Thermal Resistance($^{\circ}$ C/W): 0.3~0.5 (Varies Upon COB Chips)

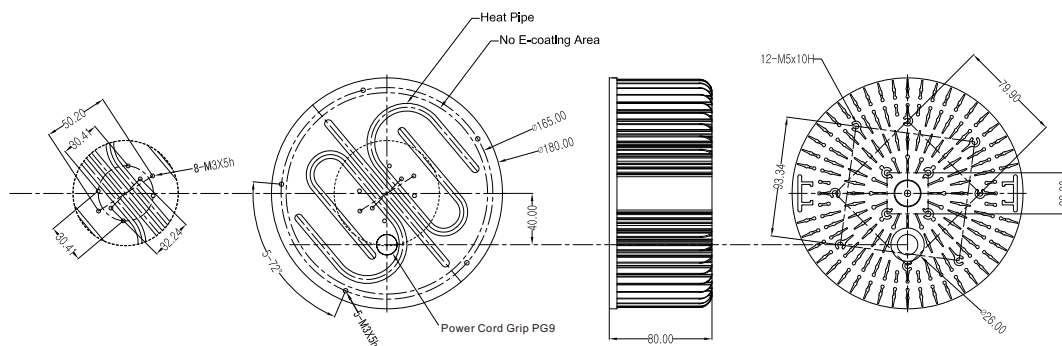
Total Dissipated Power (W): 80W~100W

Weight : 1.10 kgs/2.4 lbs

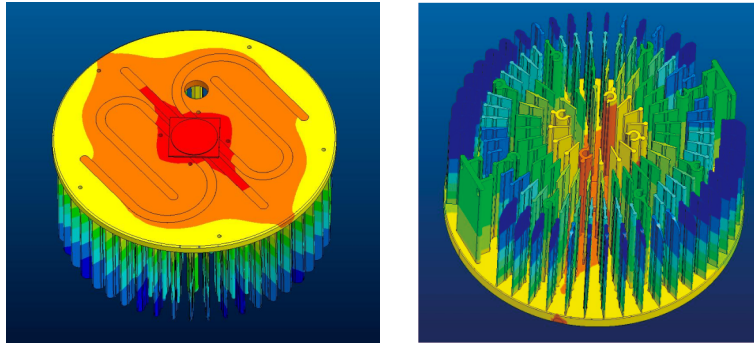
Material: AL1070 with 3pcs ϕ 6mm heat pipes

Surface Treatment Options : Electrophoresis Black or Glossy White

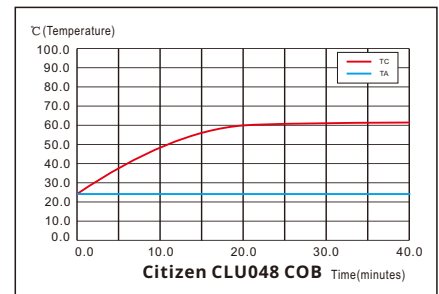
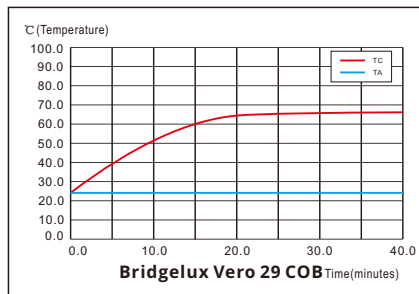
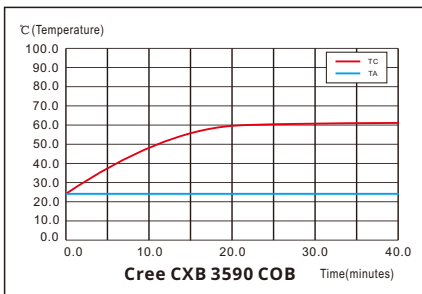
100W Heat Pipes Module Dimensions:



Heat Dissipation Simulation:



Temperature Rise Curve:



COB	LED Power (W)	Ambient Temperature Ta (°C)	COB Case Temperature Tc (°C)	Temperature Rise ΔT (°C)	Thermal resistance Rc-a (°C/W)	Angle of LED Simulator
Cree CXB 3590	100	25	62.5	37.5	0.38	90°
Bridgelux Vero 29	100	25	68.5	43.4	0.43	90°
Citizen CLU048	100	25	61.5	36.5	0.37	90°

Applications:

A great variety of applications in High Bay Light, Down Light, Flood Light, Street Light, Sports Light, and more.

