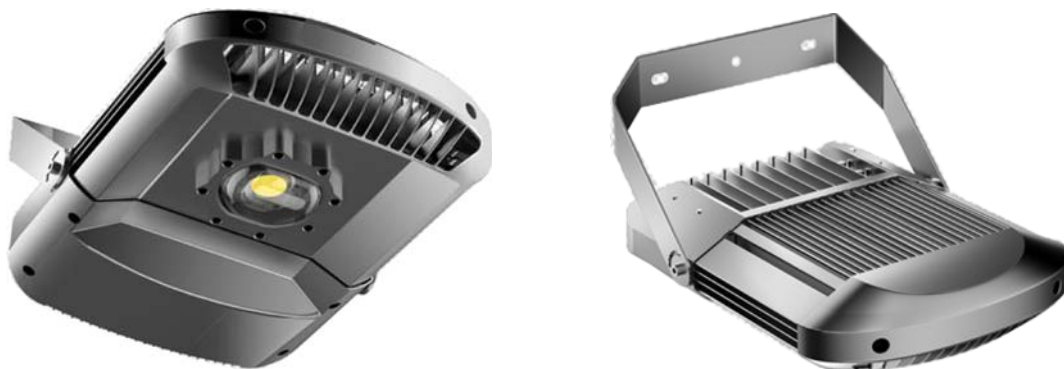




## 200W COB Flood Light FE1200-002-A01 (26,000 Lumens)



COB Flood Light

### Features :

- Patented 200W High Efficacy (140lm/w) & Least Thermal Requirement COB Chip ( $T_c < 70^\circ\text{C}$ )
- Industry's Best Patented Super Speedy (Sonic Speed) Phase-Change Cooling Solution
- Operating Temperature:  $-40^\circ\text{C} \sim 55^\circ\text{C}$  ( $-40^\circ\text{F} \sim 131^\circ\text{F}$ )
- IP Protection: IP66
- Life Span(L70)  $> 50,000\text{hrs}$  @  $25^\circ\text{C}$
- Great Variety of COB LED Lighting Applications

### Electrical Specifications:

Model Number: FE1200-002-A01  
Wattage: 200W  
Voltage: AC90-305V 50/60Hz  
LED Light Source: 200W K-COB Chip  
Power Factor (PF) :  $\geq 0.92$   
Driver Efficiency:  $\geq 93.5\%$   
Surge Protection: IEEE C62.41.2 10KV/10KA

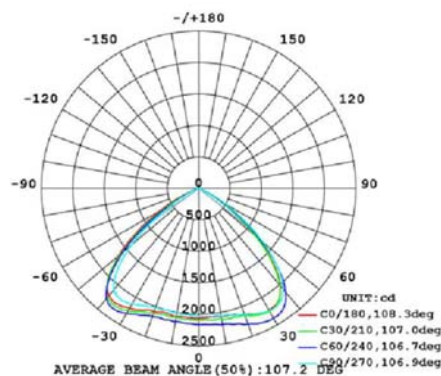
### Mechanical Specifications:

Dimension (mm): 505X270X107mm  
Patented Aluminum Phase Change Heat Sink Chamber and Micro Nano Working Fluid  
Life Span(L70)  $> 50,000\text{hrs}$  @  $25^\circ\text{C}$   
IP Rating: IP66

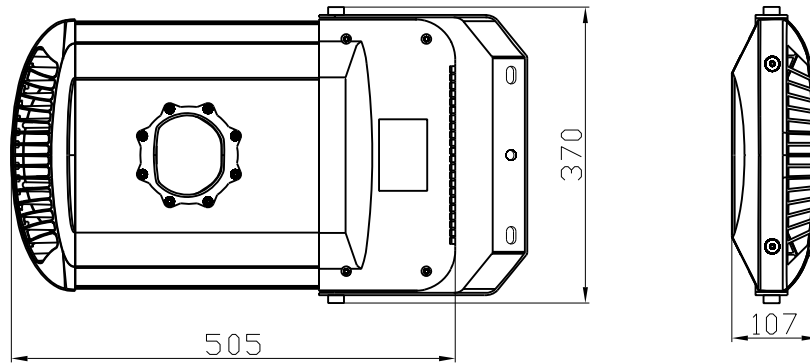
### Photometric Specifications:

Luminous Flux: 22,000~26,000lm  
Color Rendering Index(CRI):  $> 70\text{Ra}$   
Color Temperature(CCT): 6000~6500K  
Optional Beam Angle:  $20^\circ / 120^\circ / 90^\circ$

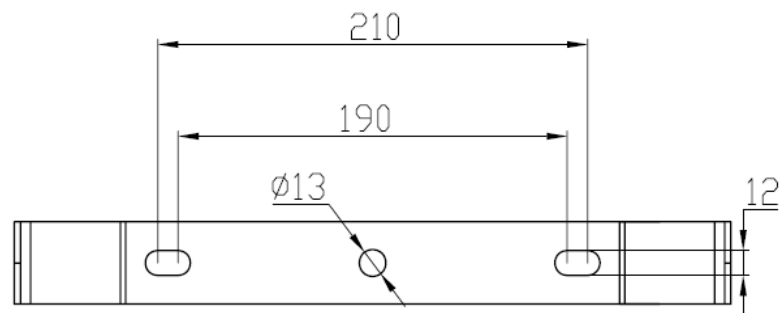
### Light Distribution Curve:



## FE1200-002-A01 Dimensions:



## Installation (Mounting Bracket):



## Applications:

A Great Variety of Applications on Spacious Environment, like Area/Street, Tunnel, Air Port/Sea Port Shipping Yards, Oil Refinery and more.

