



40~50W COB LED Down Light Heat Sink Module (6") CSB0045B-A01

COB Heat Sink



Features :

- Best Thermal Performance for 40W~50W COB LED (Recessed) Down Light / Track Light Application
- Integral Whole Design: Heat Sink and LED Driver Power Cables Conduit Box
- Best Fit Most Popular COB LED Brands: Cree CXB3050 / Bridgelux V18 (50W) / Citizen CLU038; Thermal Resistance 0.8~1.1°C/W
- Cold-Forging Benefits: Lower Fin Height, Lighter Weight, and Down Size
- Better Thermal Conductive Aluminum AL1070 Material Than Extrusion AL6061 or Die-Casting ADC12
- Advanced Surface Treatment for Corrosion Protection
- Great Varieties of LED Lighting Applications

Product Information:

Model Number: CSB0045B-A01

Dimension (mm): ϕ 135.4x46

Heat Sink Surface Area(mm²): 138,816

Tested COB Brightness (lm): 4800~6000

Thermal Resistance(°C/W): 0.8~1.1

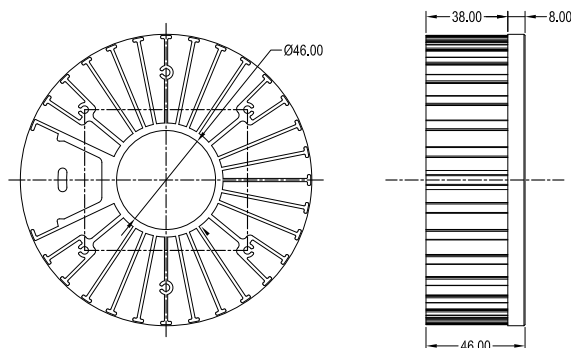
Total Dissipated Power (W): 40W~50W

Weight : 0.6 kgs/1.32 lbs

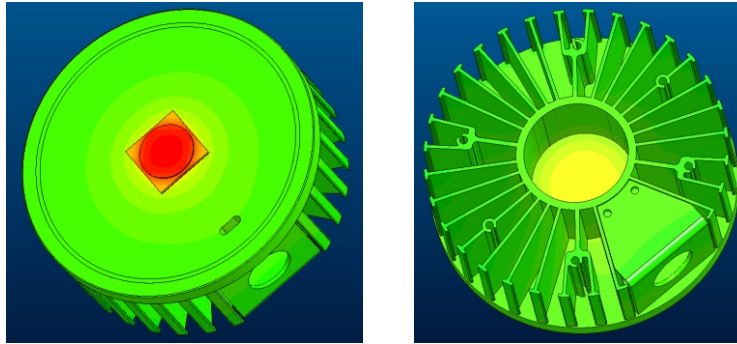
Material: Al1070 Aluminum

Surface Treatment Options : Anodized Black/Clear; Electrophoresis Black

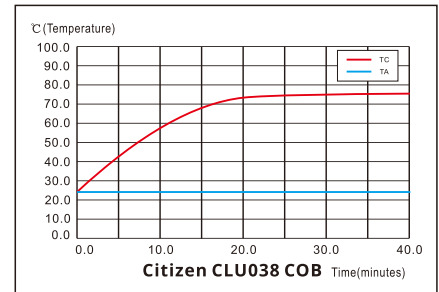
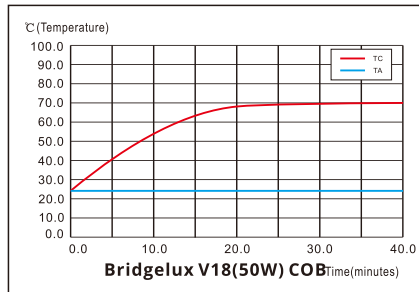
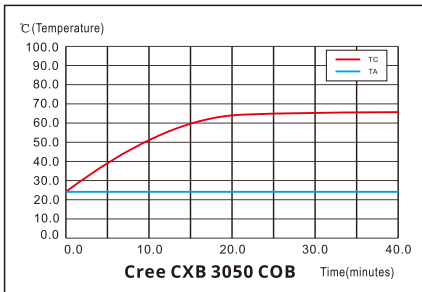
CSB0045B-A01 Dimensions:



Heat Dissipation Simulation:



Temperature Rise Curve:



COB	LED Power (W)	Ambient Temperature Ta (°C)	COB Case Temperature Tc (°C)	Temperature Rise ΔT (°C)	Thermal resistance Rc-a (°C/W)	Angle of LED Simulator
Cree CXB 3050	50	25	66.6	41.6	0.83	90°
Bridgelux V18(50W)	50	25	70.1	45.1	0.90	90°
Citizen CLU038	50	25	76.8	51.8	1.04	90°

Applications:

A great variety of applications in Recessed Down Light, Track Light, Spot Light and more

