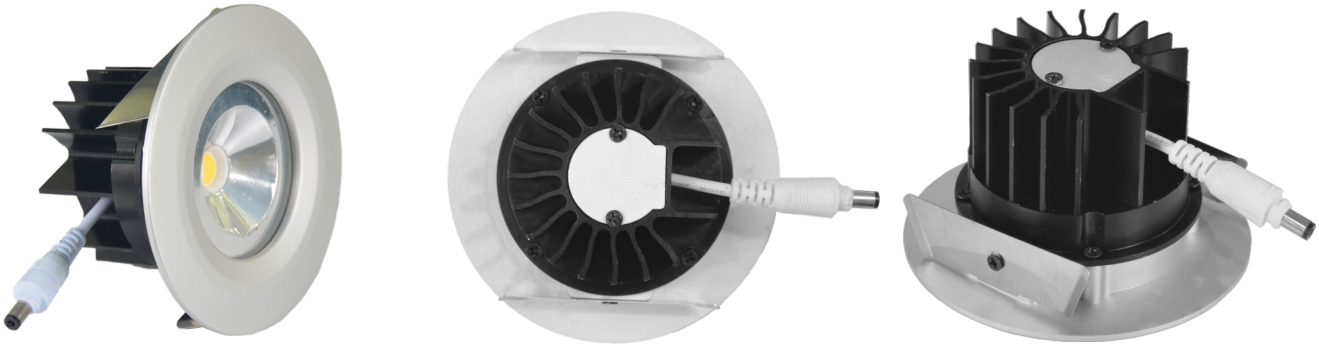


9~15W COB LED Down Light Heat Sink Module (2") DG074-015-001



Features :

- Best Thermal Performance for 9~15W COB LED (Recessed) Down Light/Track Light Application
- Integral Whole Design: Heat Sink and LED Driver Power Cables Conduit Box
- Best Fit Most Popular COB LED Brands: Cree CXB1816 / Citizen CLU028 / Samsung LC020C; Thermal Resistance 3.5~5.5°C/W
- Cold-Forging Benefits: Lower Fin Height, Lighter Weight, and Down Size
- Better Thermal Conductive Aluminum AL1070 Material Than Extrusion AL6061 or Die-Casting ADC12
- Advanced Surface Treatment for Best Corrosion Protection
- Great Varieties of LED Lighting Applications

Product Information:

Model Number: DG074-015-001

Dimension (mm): Ø74x46.31

Cooling Surface(mm²): 51,118

Cooling Performance (lm): 1,000~1,440

Thermal Resistance(°C/W): 3.5~5.5

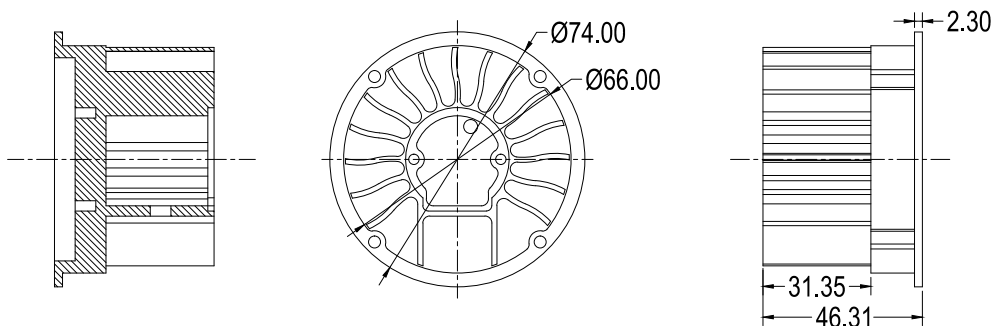
Dissipated Power (W): 9W~15W

Weight: 0.168 kgs/0.36 lbs

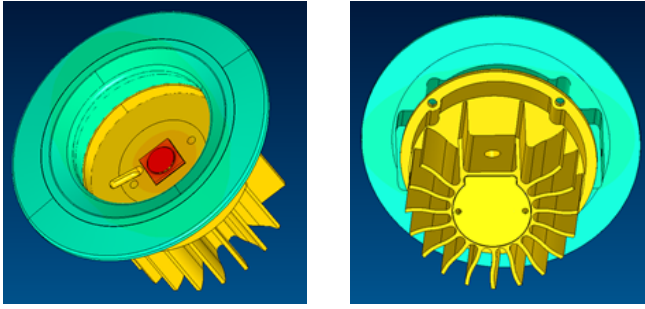
Material: AL1070 Aluminum

Surface treatment options: Anodized Black or clear; Electrophoresis Black

DG074-015-001 Dimensions:



Heat Dissipation Simulation:



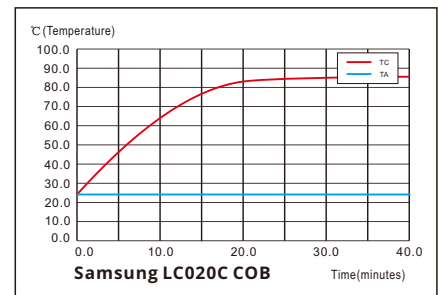
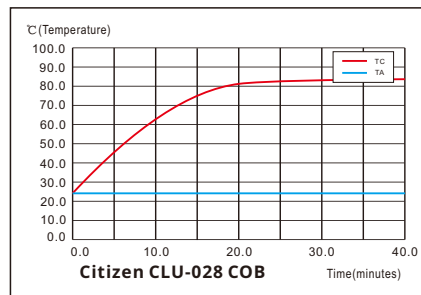
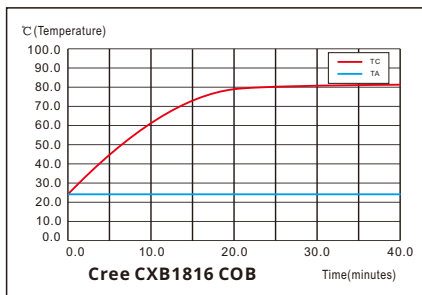
Applications:

A great variety of applications in Recessed Down Light, Track Light, Spot Light and more



Temperature Rise Curve:

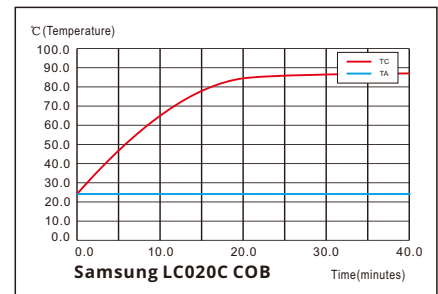
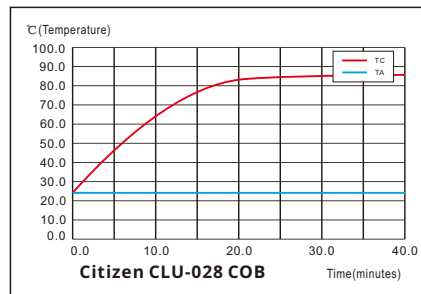
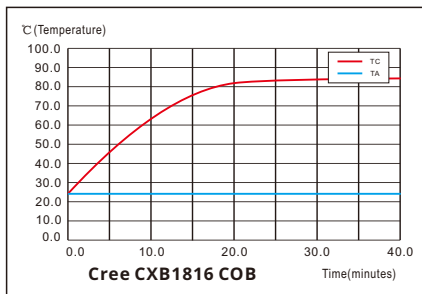
(Test Condition: With Glass Cover only)



COB	LED Power (W)	Ambient Temperature Ta (°C)	COB Case Temperature Tc (°C)	Temperature Rise ΔT (°C)	Thermal resistance Rc-a (°C/W)	Angle of LED Simulator
Cree CXB1816	15	25	82.5	57.5	3.83	90°
Citizen CLU-028	15	25	84.6	59.6	3.97	90°
Samsung LC020C	15	25	86.3	61.3	4.08	90°

Temperature Rise Curve:

(Test Condition: Wood Box+Heat Insulation Foam+Metal Enclosure Box+Glass Cover)



COB	LED Power (W)	Ambient Temperature Ta (°C)	COB Case Temperature Tc (°C)	Temperature Rise ΔT (°C)	Thermal resistance Rc-a (°C/W)	Angle of LED Simulator
Cree CXB1816	12	25	84.2	59.2	4.93	90°
Citizen CLU-028	12	25	85.6	60.6	5.05	90°
Samsung LC020C	12	25	86.8	61.8	5.15	90°