

## 20~30W COB LED Down Light Heat Sink Module (4") DG092-030-001



### Features :

- Best Thermal Performance for 20~30W COB LED (Recessed) Down Light/Track Light Application
- Integral Whole Design: Heat Sink and LED Driver Power Cables Conduit Box
- Best Fit Most Popular COB LED Brands: Cree CXB2530 / Bridgelux V18 / Citizen CLU038 / Samsung LC030C; Thermal Resistance 1.5~2.5°C/W
- Cold-Forging Benefits: Lower Fin Height, Lighter Weight, and Down Size
- Better Thermal Conductive Aluminum AL1070 Material Than Extrusion AL6061 or Die-Casting ADC12
- Advanced Surface Treatment for Best Corrosion Protection
- Great Varieties of LED Lighting Applications

### Product Information:

Model Number: DG092-030-001

Dimension (mm): Ø92x48

Cooling Surface(mm²): 75,529

Cooling Performance (lm): 2,400~3,600

Thermal Resistance(°C/W): 1.5~2.5

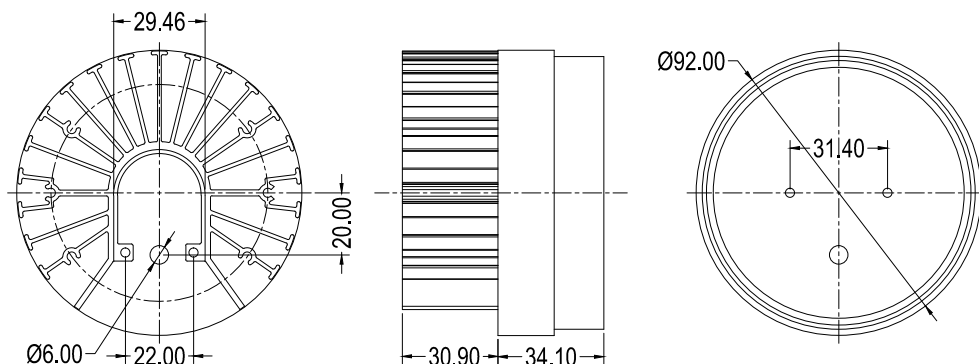
Dissipated Power (W): 20W~30W

Weight: 0.28 kgs/0.62 lbs

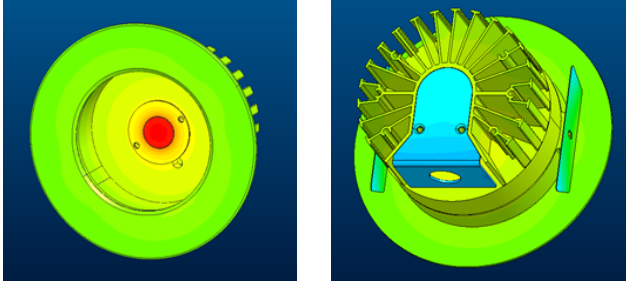
Material: AL1070 Aluminum

Surface treatment options: Anodized Black or clear; Electrophoresis Black

### DG092-030-001 Dimensions:



## Heat Dissipation Simulation:



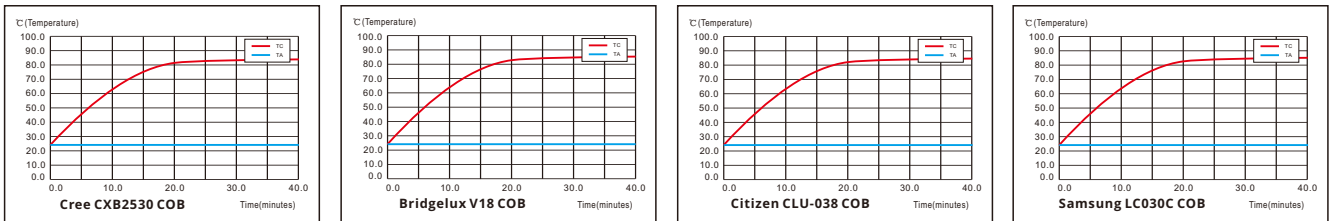
## Applications:

A great variety of applications in Recessed Down Light, Track Light, Spot Light and more



## Temperature Rise Curve:

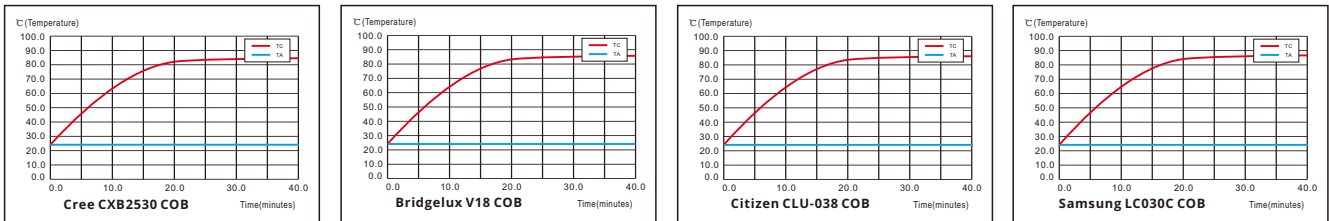
(Test Condition: With Glass Cover only)



COB	LED Power (W)	Ambient Temperature Ta (°C)	COB Case Temperature Tc (°C)	Temperature Rise $\Delta T$ (°C)	Thermal resistance Rc-a (°C/W)	Angle of LED Simulator
Cree CXB2530	30	25	83.0	58.0	1.93	90°
Bridgelux V18	30	25	86.0	61.0	2.03	90°
Citizen CLU-038	30	25	84.5	59.5	1.98	90°
Samsung LC030C	30	25	85.5	60.5	2.01	90°

## Temperature Rise Curve:

(Test Condition: Wood Box + Heat Insulation Foam + Metal Enclosure Box + Glass Cover)



COB	LED Power (W)	Ambient Temperature Ta (°C)	COB Case Temperature Tc (°C)	Temperature Rise $\Delta T$ (°C)	Thermal resistance Rc-a (°C/W)	Angle of LED Simulator
Cree CXB2530	25	25	84.5	59.5	2.38	90°
Bridgelux V18	25	25	85.8	60.8	2.43	90°
Citizen CLU-038	25	25	86.3	61.3	2.45	90°
Samsung LC030C	25	25	87.4	62.4	2.49	90°