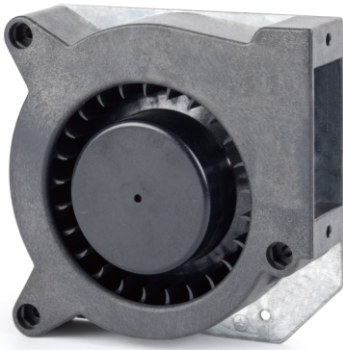


# DC BLOWER 121x121x37mm



**Spiral Housing:** Fiberglass-Reinforced Polycarbonate  
**Housing Base:** Galvanized Steel Plate  
**Blade:** Thermoplastic PBT, UL 94V-0  
**Insulation Resistance:** 10M  $\Omega$ , 500VDC/min between bare wire and frame  
**Dielectric Strength:** 5mA max. 500VAC/min between bare wire and frame  
**Operation Temperature:** -20°C~70°C(Humidity 15%-90%RH)  
**Storage Temperature:** -40°C~85°C(Humidity 15%-90%RH)  
**Lead Wire:** UL Type #24 AWG  
**Weight:** 500 g      **Packing:** 20PCS/CTN



DC Blowers

| Model Number      | Voltage (VDC) | Op.Voltage (VDC) | AirFlow (CFM) | StaticPres. (mm-H <sub>2</sub> O) | Noise (dBA) | Speed (RPM) | Current (mA) | Power (W) | Available Bearing | Curves |
|-------------------|---------------|------------------|---------------|-----------------------------------|-------------|-------------|--------------|-----------|-------------------|--------|
| FBD1237B12W5-51 ★ | 12            | 10.0~13.8        | 22.00         | 13.20                             | 52.00       | 2,500       | 630          | 7.56      | B,S               | ①      |
| FBD1237B12W7-51 ★ | 12            | 10.0~13.8        | 26.00         | 19.30                             | 55.00       | 2,800       | 950          | 11.40     | B,S               | ②      |
| FBD1237B24W5-51 ★ | 24            | 20.0~28.0        | 22.00         | 13.20                             | 52.00       | 2,500       | 310          | 7.44      | B,S               | ①      |
| FBD1237B24W7-51 ★ | 24            | 20.0~28.0        | 26.00         | 19.30                             | 55.00       | 2,800       | 420          | 10.08     | B,S               | ②      |
| FBD1237B48W5-51 ★ | 48            | 25.0~52.0        | 22.00         | 13.20                             | 52.00       | 2,500       | 160          | 7.68      | B,S               | ①      |
| FBD1237B48W7-51 ★ | 48            | 25.0~52.0        | 26.00         | 19.30                             | 55.00       | 2,800       | 230          | 11.40     | B,S               | ②      |

- For "Sleeve" bearing version, change the "B" in the model number to "S".
- If model depicts "★", auto restart protection function built in.

Specifications are subject to change without notice

